

1. Introduction

Thank You for purchasing the ADSL Nation X-Modem. Please take a few moments to follow these simple instructions to get-online quickly and easily.

Package Contents

X-Modem
UK mains adaptor
Telephone cable
Cross over Ethernet cable
USB cable

Hardware Installation

Plug one end of the telephone cable in to the X-Modem and the other to an ADSL Microfilter connected to your phone line. Ensure that all your telephone equipment is connected to a microfilter / splitter.

Connect the power adapter to the X-modem and plug in to a mains outlet. The ADSL & LAN LED's will flash for a few seconds. If your ADSL service has been enabled and your connection is working the ADSL LED will change to a steady on state.

Use the supplied Ethernet cable to connect the modem to the LAN port on your Computer. If a longer cable is required, use a standard RJ45 Ethernet crossover cable. When correctly connected the LAN LED will come on and will flash intermitently whe data is passed between the computer and modem.

IMPORTANT !

Before beginning configuration, please DISABLE any Personal firewall software you may be using as it will interfere with the installation process

2. Networking

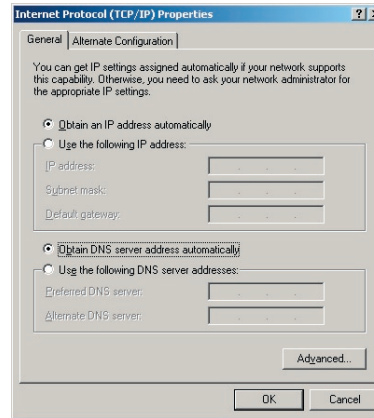
The X-Modem will automatically configure the computer's network settings. In order to do this the computer's network settings must be set to use DHCP or Automatic configuration.

Windows 2000 & XP

1. Click Start button, Settings and choose "Network & Dial-up Connections".
2. Double click Network Adapter icon and click properties.

Select the Internet Connection TCP/IP item from the list and click Properties.

Make sure that "Obtain IP address automatically" is selected and click apply.



Windows 95 & 98

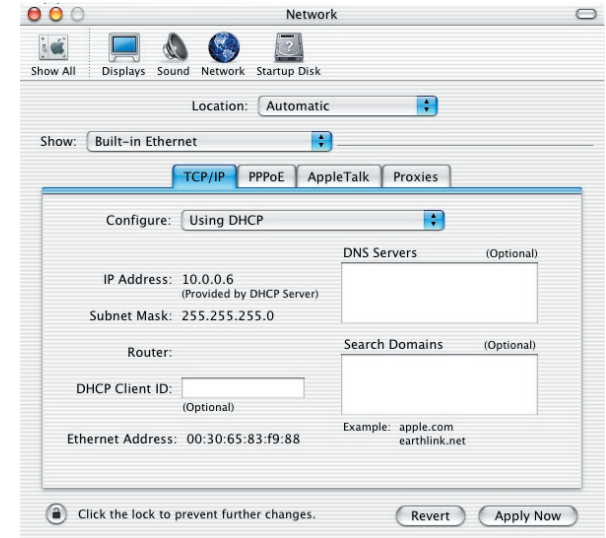
1. Click Start button, Settings and choose Control Panel.
2. Double click Network icon and select Configuration tab.

Select the TCP/IP line that has been associated with your network card in the Configuration tab and click Properties.

Make sure that "Obtain IP address automatically" is selected and click apply.

MacOS X

1. Open the System Preferences utility and click on the network icon.
2. Select show "built-in Ethernet" and set configure using DHCP. Click on Apply Now to complete.



MacOS 9

1. Open the TCP/IP control panel. You can find it in the Apple Menu under the folder "Control Panels."
2. Make sure your network card is selected usually "built-in Ethernet" and set configure using DHCP. Close the window and save changes if prompted.

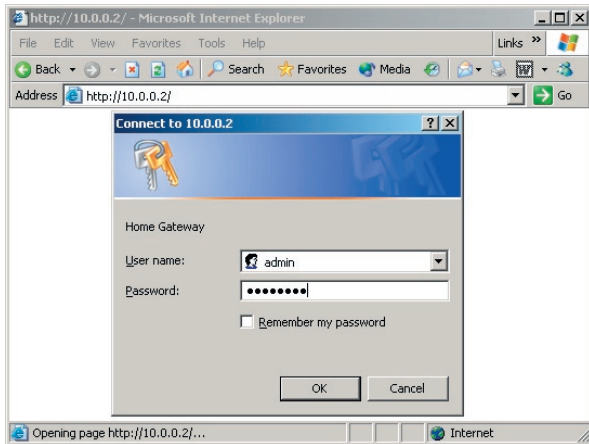
PLEASE REBOOT THE COMPUTER - FOR CHANGES TO TAKE EFFECT

3. Configuration

The X-Modem offers a web-based (HTML) graphical user interface allowing users to manage the modem using a standard browser such as Netscape Navigator or Microsoft Internet Explorer.

Accessing the Web Manager

1. Launch the Web browser.
2. Enter the LAN port default IP address `http://10.0.0.2` in to the browser.



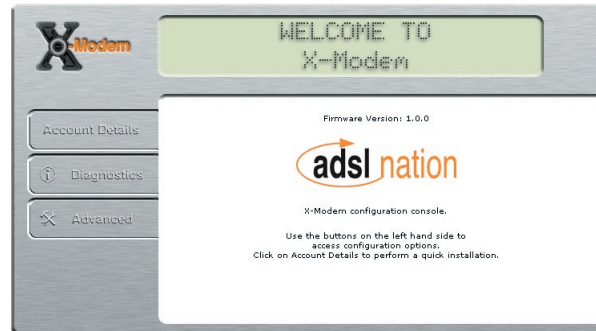
3. If prompted enter the default login User Name and Password.

Default login details

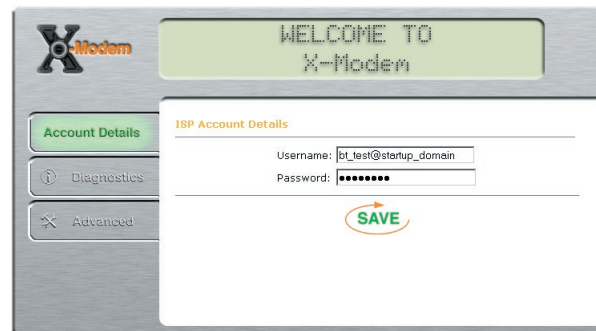
User Name: **admin**
Password: **password**

The user name and password prompt may take up to 1 min. the first time the modem is accessed.

Quick & Easy Setup



Click "Account Details" to begin set-up.



Enter your account details as provided by your Internet Service Provider and click save.

The X-Modem will now reboot. After rebooting is complete you will automatically be connected to the internet. Click on the Diagnostics button to test the connection.

For further information & support please visit

www.adslnation.com/support

or call us on

01865 761114

adsl nation

X-Modem
Quick Start Guide



www.adslnation.com